



Case Study

Regent House, 136 George Street, Edgware Road, London

Osborne Construction appointed Cycle-Works to handle the cycle storage requirements when they were awarded the £40 million **Regents House** reconstruction project contract. The extensive project involved refurbishment of office accommodation over six floors, four ground floor retail units and 24 private residential apartments.

This is part of London's broader retail regeneration strategy for Edgware Road, which **The Portland Estate** will manage. Due to the varied use of the building, there was a requirement for a range of high quality, secure cycle storage solutions to suit both workers and residents.



Stiff + Trevillion were the main architect on the projects.



Cycle-Works worked directly with Osborne Construction, the main contractor on the project.

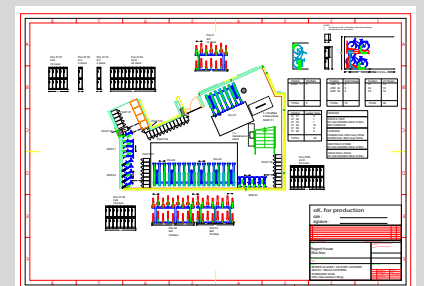


The same colour scheme was carried across all products.

Our Solution

As Regents House is a multi-purpose facility, there was a need for multiple cycle storage solutions on site. In addition, there was a requirement for lockers to store clothes and accessories during the day. The basement level cycle parking area offers a range of secure cycle parking solutions for all users. This includes:

Josta 2-Tier bike racks with **gas-assisted lifting** designed to park 220 bicycles on-site. The Josta 2-Tier rack offers space-efficient 2 tier bike parking, with one rack directly above the other. The racks are safe, quick and easy to use. Regents House opted for the gas assisted option. This allows for easier lifting of the top rack making it more accessible for users.



Cycle-Works helped Osborne to produce a layout that maximised the space.



Case Study

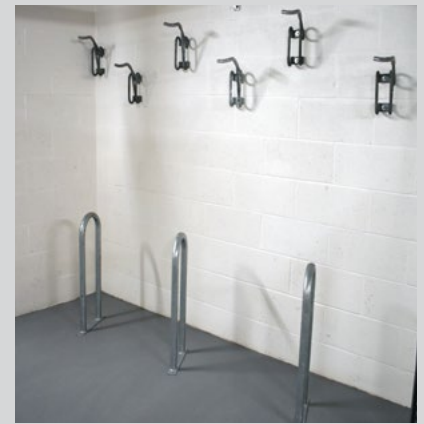
Regent House, 136 George Street, Edgware Road, London

Josta Wall Racks Continuing the theme of space-efficient cycle storage Cycle-Works also installed wall racks designed to store bikes vertically to maximise the space available. The functional and well-designed wall mounted rack holds the bicycle securely in place and in addition, the optional security bar opted for at Regents House provides a locking point for the bike frame.

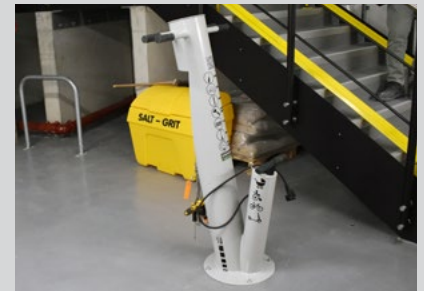
ATEPAA® clothes lockers The solid and highly durable ATEPAA lockers have been installed to provide cyclists with a safe place to store their accessories while they work or shop at Regents House. The lockers chosen incorporate a digital locking keypad. This allows them to either be assigned to a specific user or single-use for occasional use.



The impressive entrance to 136 George Street



Angled Josta wall racks make good use of all available space.



The maintenance stand has tools and a pump to help you get home.

Wheeling ramps were installed to make the basement easily accessible for cyclists. The sturdy wheeling ramps installed were made from 3mm galvanised and powder coated mild steel with a perforated metal non-slip surface.

Bike service station designed to provide a vital service for resident and commuter cyclists. The work station enables cyclists to repair bikes with minor mechanical problems before continuing their onward journey.

One **Sheffield stand** was installed for additional cycle parking on site.



The wheeling ramps makes accessing the bike area much easier.