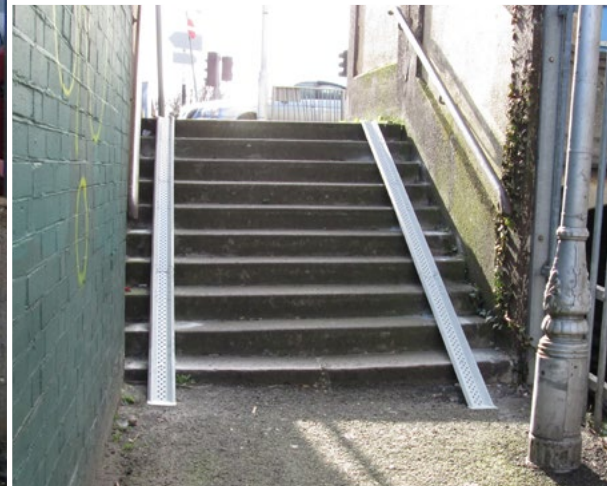
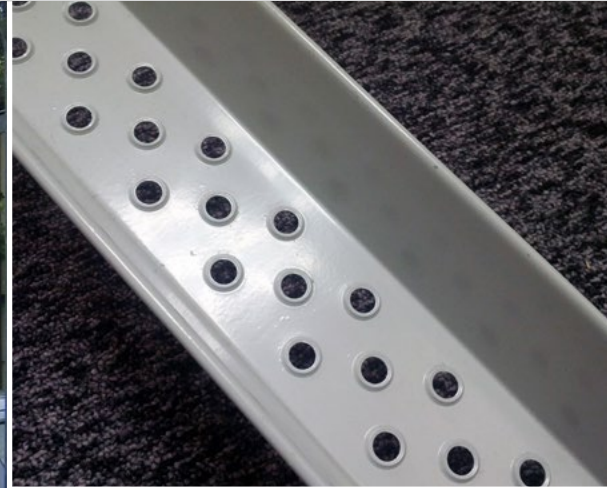




Wheeling Ramps



Dimensions in mm

- Length 2300 long sections
- Width 140 wide in total, 100 wide channel
- Fixing brackets needed every 3 steps

Overview

Wheeling ramps make stairs accessible and much safer to use for cyclists.

The Cycle-Works wheeling ramp is a flexible kit that is delivered in 2.3m long sections, which can be cut to size and/or connected to form channels of any length. Angled top and bottom sections are connected to the channel allowing for the bike to be wheeled on and off smoothly. The channel of the ramp has perforated metal holes along its length, this adds grip in all weather and is hard wearing.

Features & Benefits

- Supplied in 2.3m long sections, to be cut to size on site.
- Metal hard wearing non-slip surface.
- Mild steel construction.
- Easy guide channel opening.
- Can be powder coated in a range of RAL colours.
- Adjustable to accommodate different stairs.



Wheeling Ramps

3D site plans

We are able to produce accurate 3D site plans for the wheeling ramps, all we need is the tread length (the part of the stairway that is stepped on), the raiser height (the vertical portion between each tread on the stair), how many stairs are in each flight and if there are any landings. A 3D plan helps you get a good understanding of how your site will finally look, its also useful for spotting any issues that might not be initially obvious.

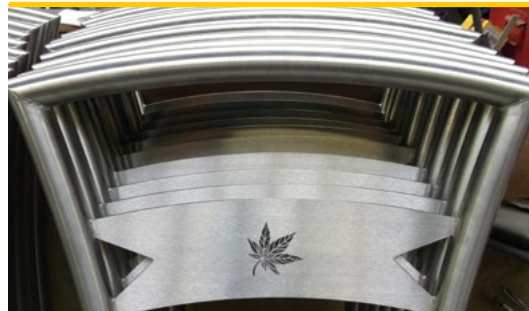
We can also superimpose a 3D render onto of a photograph of your site.



About Cycle-Works

Cycling is our passion. We believe that cycling is good for people, good for society and good for the environment. This belief underpins everything we do. We believe that the provision of quality facilities will increase the use and acceptance of the bicycle.

All our employees and associates cycle regularly in diverse disciplines such as commuting, touring and long distance audax rides. We are active in both local and national cycle campaigning.



Our Products

- Individual bicycle lockers
- High capacity 2-tier racks
- Open access and lockable shelters
- Wide range of individual racks
- Vertical and horizontal racks



Our Services

- Initial site visits
- Advice on product selection
- Consultation on your plans
- Full delivery and installation
- Aftercare and maintenance

