



Cycle-Works Ltd

The Cycle Storage Specialists

cycle-works.com • 023 9281 5555

Case Study:

Portsmouth City Council Racks

When Portsmouth City Council needed to install new cycle parking across the city they chose Cycle-Works. The requirement was for an attractive, tough rack with integrated locking points that could weather the tough maritime environment.

Our Solution

The Lock2Me rack, designed and manufactured by Cycle-Works delivers all of this and more. This beautiful rack features a laser cut logo and complements any location. They have now been installed in many locations across the city including the prestigious D-Day museum on Southsea Seafront.

The Lock2Me is manufactured in marine grade stainless steel to resist even the harshest climate. It can be supplied in surface mounted or embedded versions.



A useful location and layout that is popular with cyclists.



The two convenient locking points encourage effective security.



The rack can be embedded or surface mounted for easy installation.



They have been located a key points where demand is high.



Cycle-Works Ltd
2 Rances Way
Winchester SO22 4PN

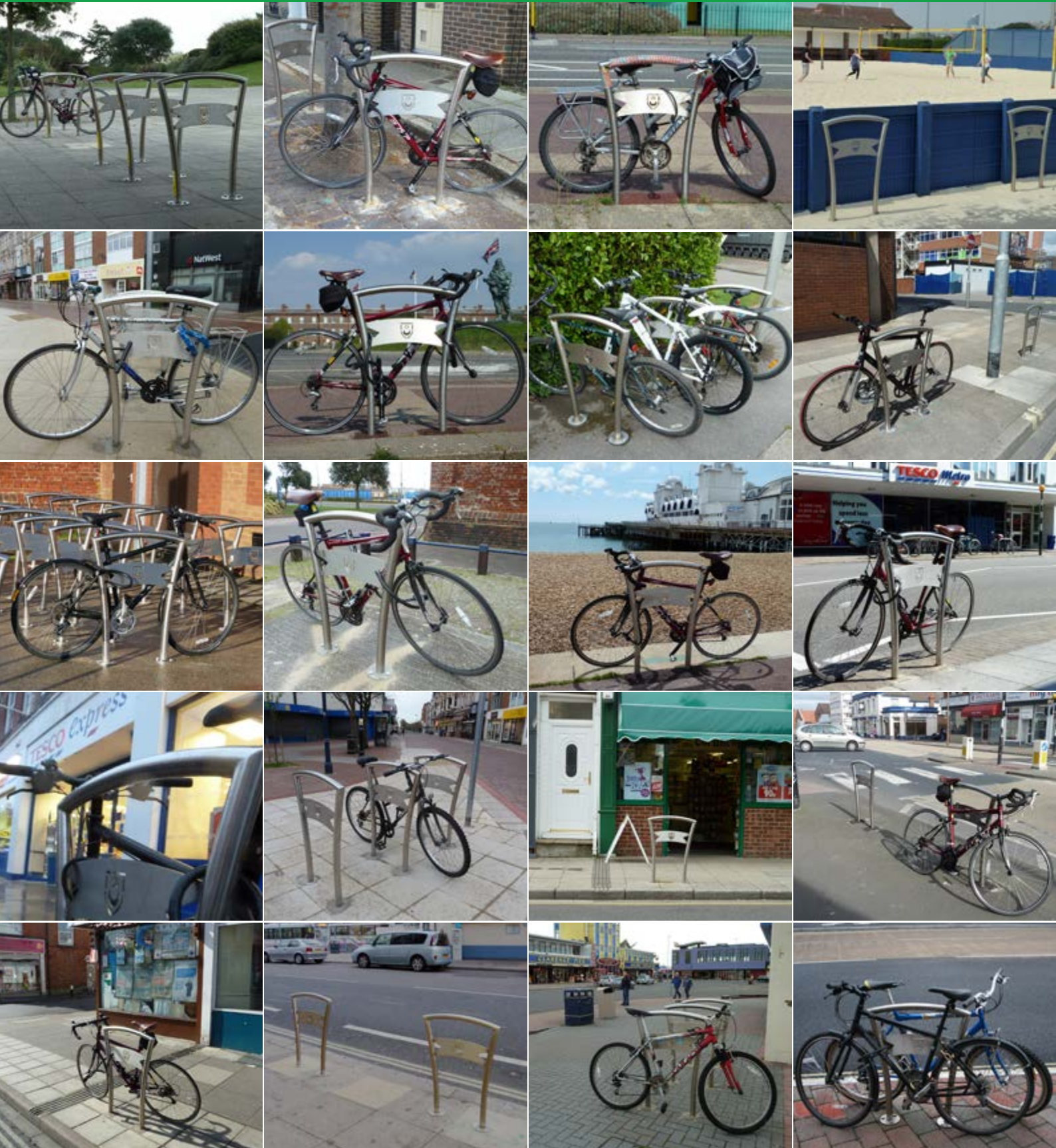
Telephone: 023 9281 5555
Fax: 023 9281 5544
Email: info@cycle-works.com



Cycle-Works Ltd

The Cycle Storage Specialists

cycle-works.com • 023 9281 5555



Cycle-Works Ltd
2 Rances Way
Winchester SO22 4PN

Telephone: 023 9281 5555
Fax: 023 9281 5544
Email: info@cycle-works.com